



insights for the life of your business™

## MAS 500

### WEB-BASED REPORTING

All Light Manufacturing reports can be generated and viewed through Microsoft Internet Explorer with our Web Reports module, at the same high level of security as with the module's standard output.

### REPORTING FEATURES

- Maintain custom form layouts for printed forms used throughout all MAS 500 modules.
- Tailor forms to your organization's design requirements.
- Export all report data to an external file. Data types supported include ASCII text, delimited, Excel, Lotus 1-2-3, HTML, RTF or Microsoft Word.
- Output any report to the screen, a printer or a variety of file formats.
- Create customized, presentation-quality reports through Crystal Reports software.

### REPORTS

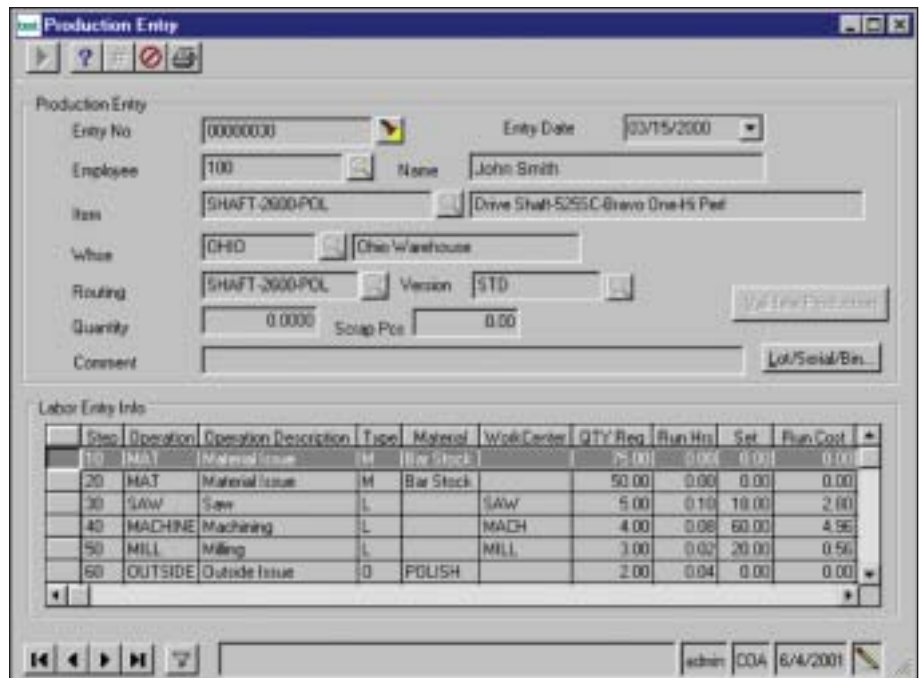
- Routing
- Work Center Where Used
- Operation Where Used
- Bill of Material
- Bill of Material Cost Rollup
- Bill of Material Where Used
- Job Costing
- Department List
- Work Center List
- Machine List
- Production Report

### MAS 500 SOLUTIONS

- CRM and E-business
- Financials and Project Accounting
- Distribution and Manufacturing
- Human Resources and Payroll
- Customization



## LIGHT MANUFACTURING



### Light Manufacturing Streamlines Manufacturing Processes

Is your production process relatively simple? Do you distribute products and have a need for advanced kitting functions? If so, then Light Manufacturing is the perfect product to help you manage production and kit assembly without complicated labor transactions or material issues.

The streamlined manufacturing system allows distributors, assemble-to-order industries, and other light manufacturers to concentrate on other critical business issues without getting tied up in complex manufacturing processes.

Light Manufacturing provides an easy-to-use Production Entry screen where finished goods are reported after the fact. This single point of entry eliminates dozens of potential labor and production transactions by automatically issuing material quantities, outside process transactions and labor time to finished goods.

Distributors can identify labor as part of the kitting process. This dramatically improves product costing, subsequent pricing and the kitting procedure.

Traditional manufacturers may need the Advanced Manufacturing module for detailed work orders, actual labor and production reporting, and real-time shop floor control.

Optional modules, such as Estimating, Product Configurator, Engineering Change Management and Material Requirements Planning can be used with Light Manufacturing.



## MAS 500 Light Manufacturing

*“MAS 500 was considerably more cost-effective than alternative solutions we reviewed. System maintenance requirements have been significantly decreased.”*

*Guy DeMeester, Director of Global IS  
Roxio, Inc.*

### FEATURES:

#### Routings/Bills of Material

Establish standard routings and bills of material for manufactured items.

- Integrated routing and bills of material time-phase labor, material and outside (subcontract) operations in chronological order.
- Routing versions enhance quality control for both labor and material revisions. Revision dates and codes identify unique routings and bills of material.
- Multimedia files and CAD drawings may be viewed at the routing header and detail levels.
- Import bills of material from popular CAD programs to the MAS 500 Routing/Bill of Material.
- Flexible work center parameters include user-defined defaults, work in process rates, and variable capacity by day for shift schedules.

#### No Work Orders

The elimination of work orders simplifies the production process.

- Use the backflush feature to automatically issue labor time, material quantities, or outside transactions as production takes place.
- The system updates inventory when the quantity of finished goods is reported.
- Light Manufacturing automatically creates a work order behind the scenes for every production entry. This is important because Light Manufacturing customers will have important work order history if they upgrade to Advanced Manufacturing in the future.

#### Labor and Production Reporting

Report production only for finished goods. Other labor transactions are automatically calculated at standard.

- Reduce the number of labor transactions by backflushing labor and overhead at standard. You can also report production in an easy, one-step process when production is completed.
- Light Manufacturing automatically calculates the quantity of each material used based on the quantity of finished goods produced.
- Standard quantities can be changed to reflect actual material usage and scrap.
- Identify which raw material and component lots or serial numbers were used in the production process.
- Eliminate the need for setup and downtime tracking by building these steps into production standards.
- Utilize a single Production Entry screen to report the quantity of finished goods produced.
- Distribute finished goods quantities to different lot or serial numbers before posting production to inventory.

#### Job Costing

Accurate job costing is critical to establishing item prices, profitability, and business planning.

- Light Manufacturing supports standard, average, LIFO, FIFO and actual costing.
- Time-phased bill of material requirements and incremental scrap calculations provide accurate manufacturing costs and lead-time calculations.
- Advanced general ledger integration provides detailed job cost tracking.

#### Optional Modules

Best Software offers several manufacturing modules that provide Light Manufacturing customers with advanced features.

- The Estimating Module is a useful tool for creating internal part estimates which can be converted directly into quotes, sales orders, and manufacturing routings.
- The powerful Product Configurator Module is a useful tool to help engineers build part routings and bills of material based on pre-defined rules.
- The Engineering Change Management module helps Light Manufacturers manage changes to their routing and bill of material definitions.