



insights for the life of your business™

MAS 500

WEB-BASED REPORTING

All Shop Floor Control reports can be generated and viewed through Microsoft Internet Explorer with our Web Reports module, at the same high level of security as with the module's standard output.

REPORTING FEATURES

- Maintain custom form layouts for printed forms used throughout all MAS 500 modules.
- Tailor forms to your organization's design requirements.
- Export all report data to an external file. Data types supported include ASCII text, delimited, Excel, Lotus 1-2-3, HTML, RTF or Microsoft Word.
- Output any report to the screen, a printer or a variety of file formats.
- Create customized, presentation-quality reports through Crystal Reports software.

REPORTS

- Current Activity
- Employee Job Ticket Printing

MAS 500 SOLUTIONS

- CRM and E-business
- Financials and Project Accounting
- Distribution and Manufacturing
- Human Resources and Payroll
- Customization



SHOP FLOOR CONTROL

Real-Time Labor and Production Reporting from the Shop Floor with Integrated Bar Coding

MAS 500's Shop Floor Control system provides real-time labor and production reporting for online production visibility throughout the enterprise. The shop floor menu was designed for use with touch screen technology and handheld devices.

Shop Floor Control provides access to all of the activities that generally take place in the shop. Users can log into or out of operations manually or they can use the built-in bar coding functionality to scan work order numbers and work order steps for automatic log-ins.

The log-in and log-out activities include easy-to-use look-ups and number pads for data entry. They also include multimedia buttons that link directly to any multimedia or CAD attachments for the work order.

A current activity report and inquiry are provided to show which employees are currently logged into a job at any manufacturing facility providing enterprise-wide visibility.

Shop Managers can assign Job Tickets to Employees through the Labor Assignments screen. Employees can then view their assigned tasks and report production using Start and Stop Job Entry. This process saves money and waste by providing a paperless shop floor environment.

The Shop Floor Control menu is easily customized to include virtually any activity, maintenance function, report or inquiry you need to run your shop floor.



MAS 500 Shop Floor Control

“With MAS 500 Manufacturing we’re going to be more competitive because we’ll have cutting edge software and a better handle on our cost of goods.”

*Tom Vanneman, CFO
Escient, Inc.*

FEATURES:

Touch Screen and Bar Code Design

The Shop Floor Control system was designed for use with touch screens and bar code technology.

- The Shop Floor Control menu can run as a stand-alone menu system installed on terminals or handheld devices.
- Screens are specially designed for use with touch screen and barcode technology.
- Barcodes can be printed on work order travelers and job tickets. Standard travelers include a barcode for the work order number and individual barcodes for each material, outside, other, or labor operation.
- Each screen includes touch screen-enabled look ups and number pads for data entry without the use of a keyboard.

Real-time Labor and Production Reporting

Labor and production information is recorded in real time.

- Employees can easily log into a job from the shop floor.
- Customer service personnel, sales, and management can view all current log-ins through various current activity reports and inquiries for a real-time look at shop floor activities.
- Real-time labor and production reporting is extremely useful for multi-company and multi-site installations, providing a glimpse into production activity at each facility.

Labor Reporting

Employees can quickly enter labor and production information.

- Employees can enter production quantities for good pieces through Stop Job entry.
- The Shop Floor Control system handles scrap entry and prompts the employee for Scrap Reason codes.
- Employees may enter downtime with Downtime Reason codes. These codes are useful for alerting supervisors and management to machine breakdowns or machines waiting for materials.
- Machine setup time can be entered into the Shop Floor Control system.
- Materials may be issued to the job from specific lots. Production reporting supports the entry of finished goods into finished goods lots. Finished goods may also be serialized during Stop Job Entry.
- Employees can issue outside processing quantities and costs to a work order from Shop Floor Control.
- Production-related notes entered during Stop Job Entry are useful for communicating information to management, supervisors, and the front office.

Work Order Inquiry

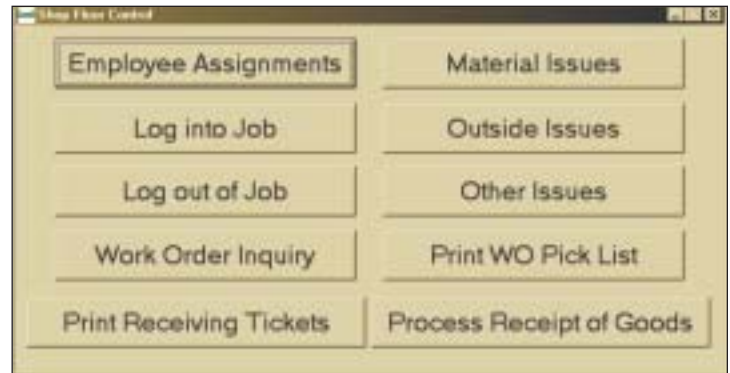
Employees can log into Work Order Inquiry to get more detailed information such as schedule dates and step detail with view-only privileges.

- The Work Order Inquiry is a portal of information for all production-related information.
- Customer service and sales can view estimated completion dates, current production status, current activities and other information in real-time.

Multiple Jobs and Multiple Parts

The Shop Floor Control system supports multi-job log-ins and production entry for co-products.

- Workers can log into multiple operations. This is very common in machining where one operator can often run several different machines at any given time.
- Labor and production quantities fully support co-products entry. Employees can enter good pieces and scrap pieces for any part listed on the work order.



Labor Assignments and Job Tickets

Supervisors can view and assign job tickets to employees for a paperless shop floor system.

- Job tickets are created for each labor step on a work order.
- Supervisors can assign a portion or all of the labor to an employee or multiple employees.
- Employees can view or print their assigned job tickets directly from the shop floor control menu.