

O2 Production

KEY FEATURES

➤ Real Time Check for Critical Materials

The O2 Production Module can check the status of the inventory used in a batch to determine whether adequate materials will be available when the batch is expected to run.

➤ Hard and Soft Allocation of Inventory

O2 Production module allows "soft" allocation of inventory meaning inventory is allocated for a batch, and "hard" allocations meaning inventory is requisitioned into a batch, i.e. put into WIP.

➤ Multiple Finished Goods and By Products Per Batch

With O2 Production Module, you can produce multiple finished goods and have multiple By-Products from a single batch

➤ Lot Property Calculations

As inventory lots are added to a production batch, the physical properties of the lots are used to update the calculated values of a batch.

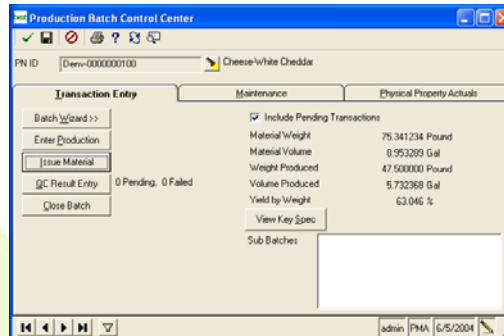
➤ "Peg" Batches to a Sales Order

For "make to order" manufacturers, O2 Production module can "Peg" sales order lines to a specific batch. If the requirement dates on the order change, the schedule date of the batch will change as well.

Other Features

- Complete and flexible costing analysis using Business Insights Analyzer
- Track QC additions for a batch
- Production yield validation

Production and production planning are the key components of operational efficiency in the process manufacturing environment. The O2 Production module provides powerful operational and analytic tools to help process manufacturers maximize efficiency and intuitively analyze historical operations.



Whether you produce complete batches, require finished goods to ship before a batch is closed or operate in a "continuous flow" environment, O2 can easily facilitate your manufacturing method.

The "Active Role Interface" is a completely customizable workbench which provides a powerful tool to manage your operational schedule.

