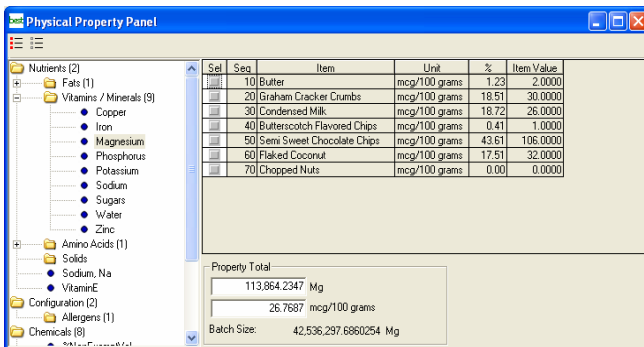


Physical Properties:

Manage the intricacies of your organization with the physical properties of O2. A physical property is a user-defined specification that can be attached to inventory items, lots, formulas, customer/item keys and QC tests and batteries. Say you want to perform a search of all formulas that are alcohol based, are red, and that have a pH level of 3-4. Or say that your company manufactures food, your specification for a certain product is 8-10 grams of fat, yet you have a customer who requires no more than 8.5 grams of fat for that product. With O2 physical properties, both of these scenarios, plus many, many more are easily managed.

Use O2 physical properties to print and manage your Certificates of Analysis, item and customer specification reports and a variety of compliance reports required by your industry.

- Physical property specifications and results can be defined as <, <=,=,>, >=. So if your test is that E. Coli is tested as <2 ppm, O2 will understand that this is not the same as E. Coli = 2 ppm
- Physical properties can be descriptive or calculated
- Define physical property groups and sub groups
- Generate customer specific Certificate of Analysis reports
- Search your inventory items and formulas by physical property



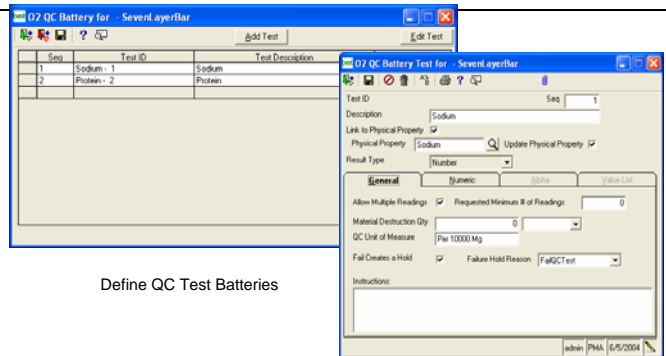
Item	Unit	%	Item Value
10) Butter	mcg/100 grams	1.23	2.0000
20) Graham Cracker Cumbs	mcg/100 grams	18.51	30.0000
30) Condensed Milk	mcg/100 grams	18.72	26.0000
40) Butterscotch Flavored Chips	mcg/100 grams	0.41	1.0000
50) Semi Sweet Chocolate Chips	mcg/100 grams	43.61	106.0000
60) Flaked Coconut	mcg/100 grams	17.51	32.0000
70) Chopped Nuts	mcg/100 grams	0.00	0.0000

Property Total
113,864,2347 Mg
26,7687 mcg/100 grams
Batch Size: 42,536,297,6860254 Mg

Physical Properties Roll-up Panel

Compliance Reporting

21CFR 11, MSDS, SARH, HAPS, HACCP, Bioterrorism Act; Just a few of the reporting requirements of process manufacturers. Become compliant with your regulatory and Best Practices requirements with O2 Compliance Reporting Module.



Quality Control

If quality control is critical to your organization, look no further than O2. With O2 you can define your quality control tests for an item or formula and define your battery of QC tests for each product.

As products are received or produced, your QC staff can have work assigned to their queue. If you require multiple readings of your QC tests, O2 can help you manage your readings. With integration to the physical properties module, the final QC reading can update the lot's physical properties. Analyze your QC data in our Business Insights Analysis Tool; with sophisticated query tools, pivot tables and graphical display generators, your QC data can now be easily accessible, powerfully searchable and dramatically presentable.

If a lot fails QC, is expired or needs to be on hold for any reason, O2 will not allow the lot to be used in production or shipped to customers.

Other features include:

- Destructive or non-destructive tests
- Multiple readings per test
- Attachments to test reading results
- QC tests can automatically put a lot on hold

Production / Production Engineering

O2 Production was designed for both batch processing and continuous flow manufacturing. Manage your production like never before with:

- "What-if" scenarios of assigning lots to a batch. How do they affect the physical properties of the batch?
- Instructions can change based on warehouse and size of batch
- Track and report on QC adds to a batch
- Critical Materials Inquiry integrates with MRP
- Unlimited cost codes for labor and overhead allocations